

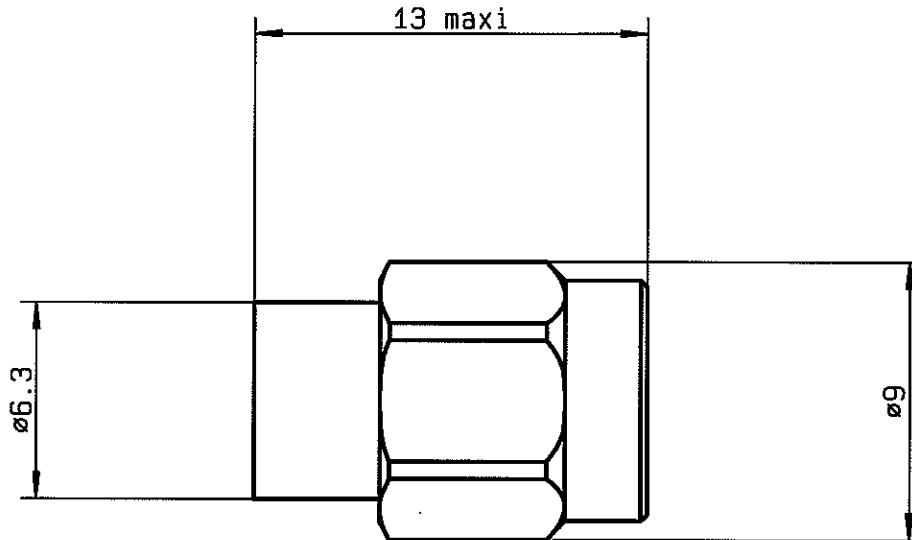


TITLE: 2 W 18GHZ SMA/m COAXIAL TERMINATION

issue
17. jan.03

Page
1 / 2

DRAWING



General tolerances: +/- 0.5 mm

MATERIALS AND FINISHES

- BODY : STAINLESS STEEL
- CONTACT : BERYLLIUM COPPER - Ni1 Au2.5
- INSULATOR : TEFLON
- GASKET : SILICONE RUBBER
- RESISTOR : ALUMINA SUBSTRATE / NICHROME RESISTIVE MATERIAL

This information is given as an indication. In the continual goal to improve our products, we reserve the right to make any modifications judged necessary.

4412-9212

CREATION					
N° :					
PEN/EP:CAT	17. jan.03	Added MATERIALS and FINISHES	TJL	VP	RADIALL® 101. rue P. Hoffmann -Z.I Ouest- 93116 ROSNY/BOIS Cedex-FRANCE Phone:33(1)49353535 Fax :33(1)48546363 Tlx RADIA 235220F
Name:KL	05.may.95	Peak power: 250W --> 100W	PG	VE	
Date:28. jun.92	16.oct.92	New format	PG		
APP.:	ISSUE	REVISIONS	NAME	APPR.	



TITLE: 2 W 18GHz SMA/m COAXIAL TERMINATION

issue
17. jan. 03

Page
2 / 2

ELECTRICAL CHARACTERISTICS

FREQUENCY RANGE : DC - 18GHz
 IMPEDANCE : 50 Ohms
 DC RESISTANCE : 50 Ohms ± 5%
 AVERAGE POWER HANDLING : 2 W at 25°C
 PEAK POWER HANDLING : 100 W (1 µs, 1%.) at 25°C

V.S.W.R : DC - 4 GHz : ≤1.10
 4 - 8 GHz : ≤1.18
 8 - 18 GHz : ≤1.25

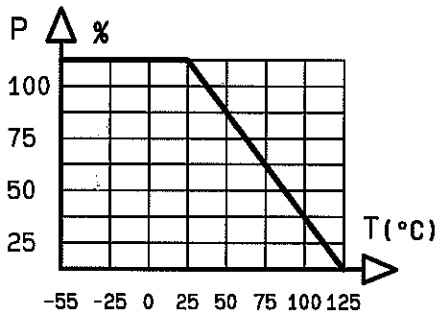
MECHANICAL CHARACTERISTICS

CONNECTOR : SMA male per MIL C 39012
 MAXIMUM WEIGHT : 3 grams

ENVIRONMENTAL CHARACTERISTICS

OPERATING TEMPERATURE RANGE (°C) : - 55 ; + 125
 STORAGE TEMPERATURE RANGE (°C) : - 55 ; + 125

Power derating
Versus temperature



This information is given as an indication. In the continual goal to improve our products, we reserve the right to make any modifications judged necessary.

CREATION				
N° :				
PEN/EP:CAT	17. jan. 03	Added MATERIALS and FINISHES	T.JL	VP
Name:KL	05. may. 95	Peak power: 250W --> 100W	PG	VE
Date:28. jun. 92	16. oct. 92	New format	PG	
APP.:	ISSUE	REVISIONS	NAME	APPR.

RADIALL®
 101. rue P. Hoffmann -Z.I Ouest-
 93116 ROSNY/BOIS Cedex-FRANCE
 Phone:33(1)49353535
 Fax :33(1)48546363
 Tvx RADIA 235220F